

Vector Frame Tabletop 01

VF-K-TT-01

Vector Frame™ Table Top Kits provide modern and dynamic flare to your marketing message. The SEG fabric graphics and extrusion-based displays are simple, lightweight and take minutes to assemble. Units come in a sturdy case. Customized units also available.



features and benefits:

- Custom appearance
- Easy to assemble
- 50mm silver extrusion frame
- Single-sided SEG dye-sublimated fabric graphics
- Installation tool included
- Kit includes one OCS case, and two literature pockets
- Lifetime hardware warranty against manufacturer defects

dimensions:

Hardware	Graphic
Assembled unit: 55.5"w x 31.75"h x 11.81"d 1410mm(w) x 806.35mm(h) x 300mm(d)	Total visual area: 39.125"w x 31.25"h 994mm(w) x 794mm(h)
Shipping	Power Stretch w/FCE-2
Shipping dimensions - ships in one case: OCS case: 19"w x 19"l x 45"h 482.6mm(w) x 482.6mm(l) x 1143mm(h)	Refer to related graphic template for more information
Approximate shipping weight (entire kit): 47.22 lbs / 21.42 kgs	Visit: www.exhibitors-handbook.com/graphic-templates

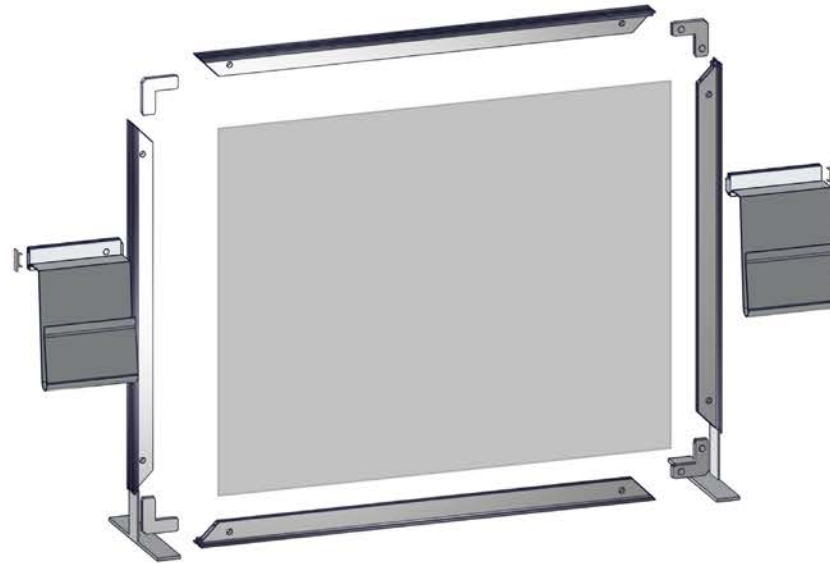
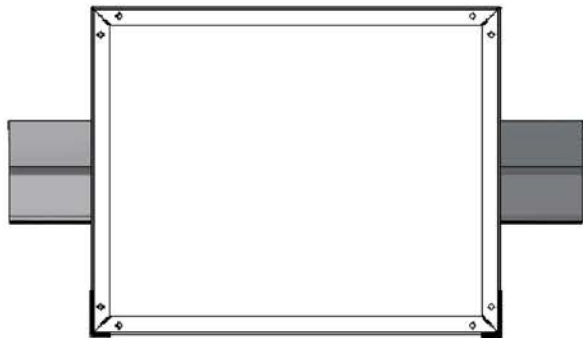
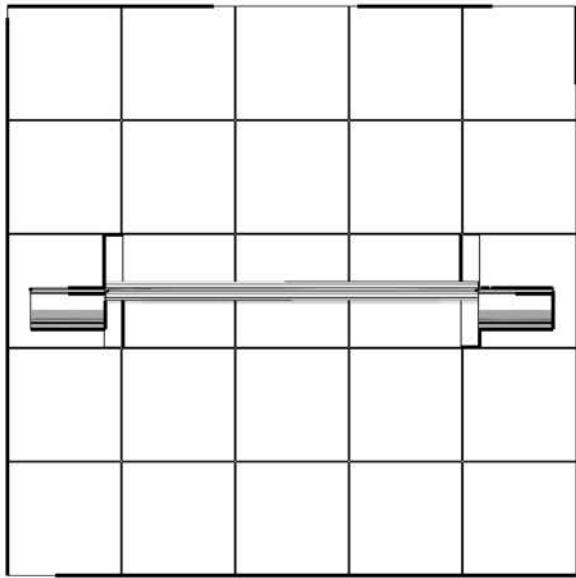
additional information:

Universal literature racks:
LN112
LN112-2
LN112-3
LN112-4

Lights: (not included)
Most fit with proper clip - LN-3P-LT-FXT

We are continually improving and modifying our product range and reserve the right to vary the specifications without prior notice. All dimensions and weights quoted are approximate and we accept no responsibility for variance. E&OE. See Graphic Templates for graphic bleed specifications.

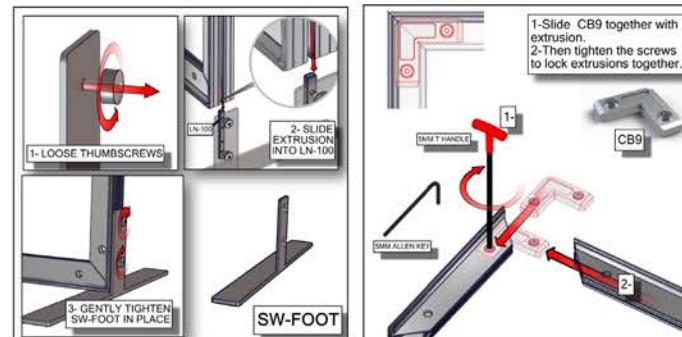
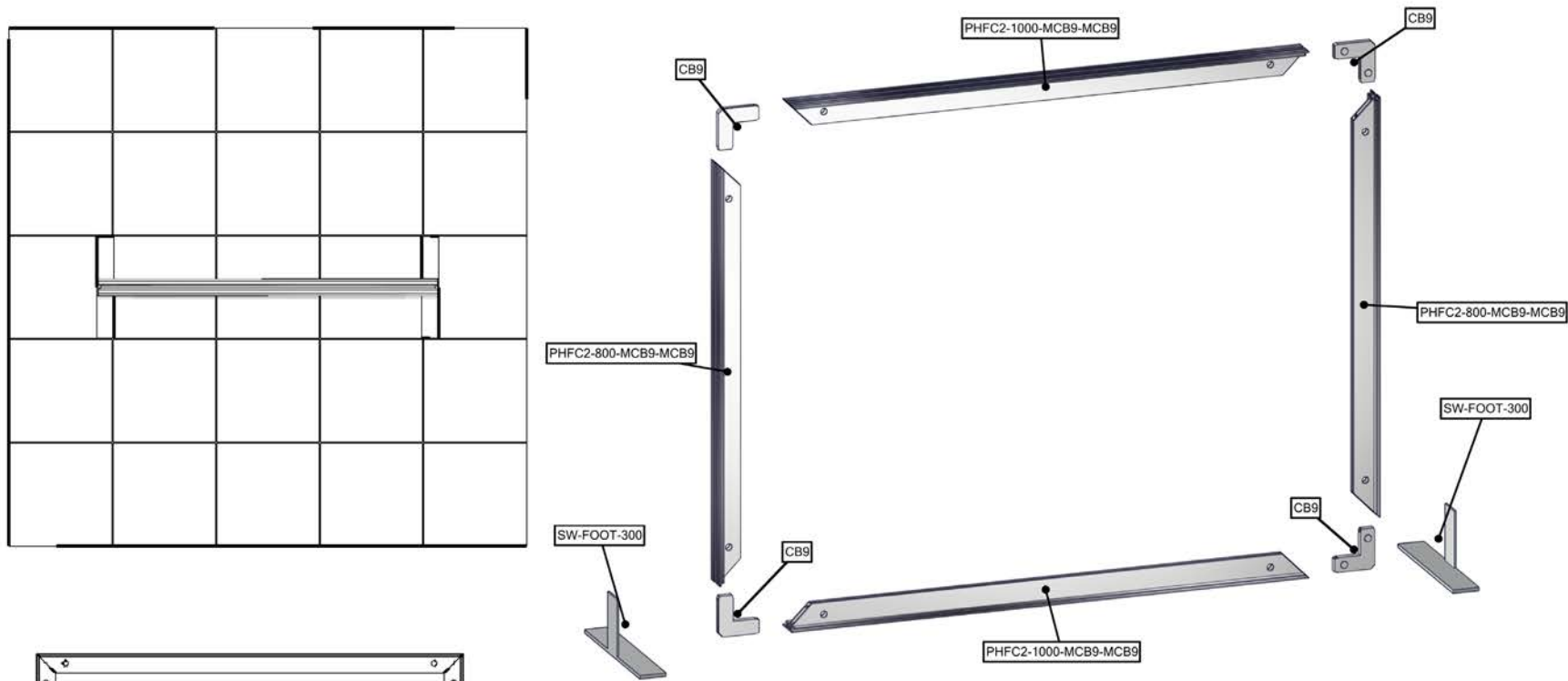
EXPLODED



QTY	CODE	DESCRIPTION
2	SW-FOOT-300	Smart Wall Foot, 300mm long
1	OCS	OCS small molded graphics case, 39.5" high
1	VF-K-TT-01-A-G	VECTOR FRAME TABLETOP KIT 1 GRAPHIC PANEL
2	LN605-EN	45mm Beam End Cap for Linear (CPH-GRAY)
4	CB9	90 degree joiner
2	LN112-4	LITERATURE POCKET FOR EXTRUSION (STYLE LN112-4)
2	PH-200-L	200mm (7.87") PH extrusion w/ Lock one end, one end cap
2	PHFC2-1000-MCB9-MCB9	1000MM LENGTH OF PHFC2 EXTRUSION-WITH MITRE CUT FOR CB9 BOTH
2	PHFC2-800-MCB9-MCB9	800MM LENGTH OF PHFC2 EXTRUSION-WITH MITRE CUT FOR CB9 BOTH SIDES
1	5MM ALLEN-T	5mm "T" Allen key tool, red handle

Step 1: Frame Assembly

- Arrange pieces on the floor as shown below.
- Slide corner CB9 together with extrusion, working around the perimeter.
- Then tighten to lock extrusion together.
- To attach SW-FOOT-300, loosen thumbscrew and slide extrusion into LN-100. Gently tighten thumbscrews to secure.



Step 2: Graphic & Lit Rack Attachment

- First, attach graphic and press FCE-2 into extrusion channel. Start in each corner of frame, then push SEG bead around the perimeter of the frame until all beading is pushed in properly.
- To attach both lit racks, Attach PH-200-L to frame at desired height and install cap LN605EN on end of extrusion.
- Insert lit rack LN112-4 into top channel by tilting the lit rack at an upwards angle and then lowering downward into place.

