

Vector Frame Tabletop 02

VF-K-TT-02

Vector Frame™ Table Top Kits provide modern and dynamic flare to your marketing message. The SEG fabric graphics and extrusion-based displays are simple, lightweight and take minutes to assemble. Units come in a sturdy case. Customized units also available.



features and benefits:

- Custom appearance
- Easy to assemble
- 50mm silver extrusion frame
- Single-sided SEG dye-sublimated fabric graphics
- Installation tool included
- Kit includes one OCS case, one wing graphic, and two literature pockets
- Lifetime hardware warranty against manufacturer defects

dimensions:

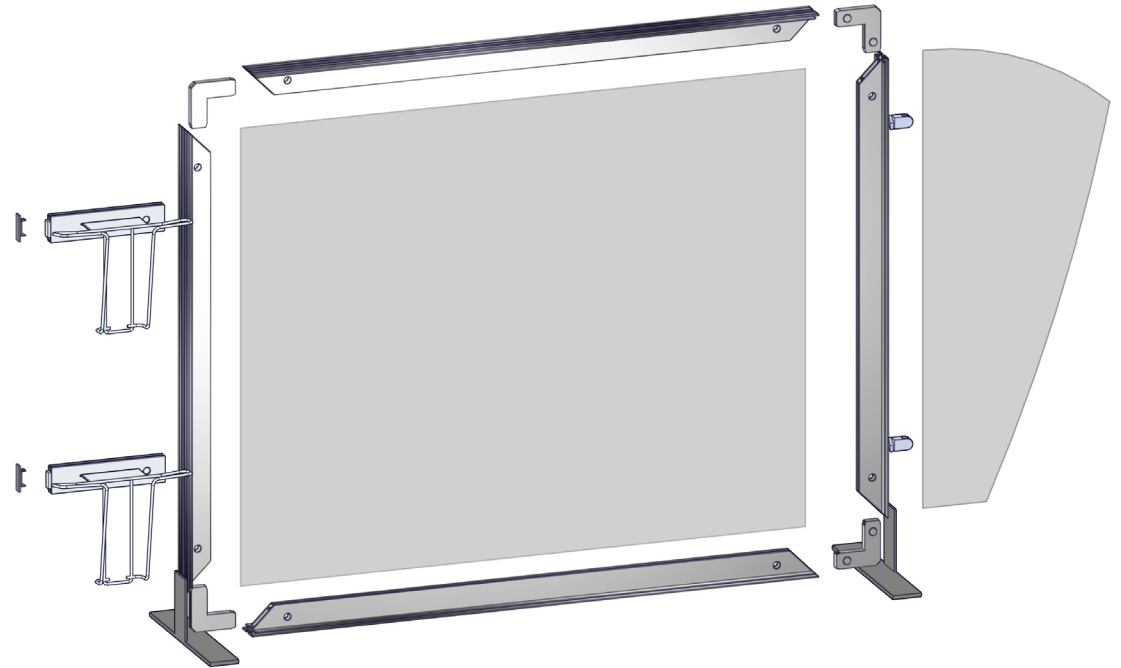
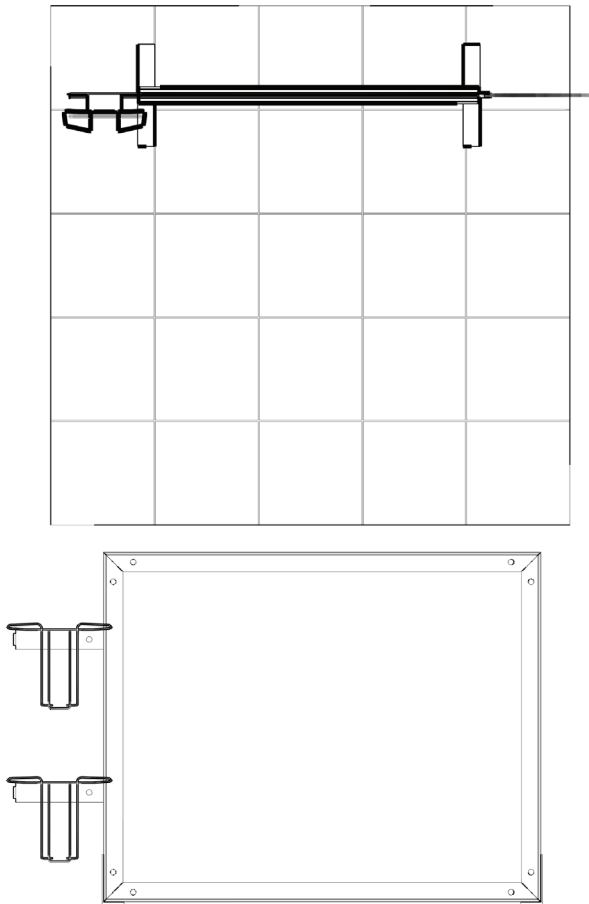
| Hardware | Graphic |
|---|--|
| <p>Assembled unit: 61.3"w x 31.77"h x 11.81"d 1556.95mm(w) x 807.15mm(h) x 300mm(d)</p> | <p>Total visual area: Right panel: 13"w x 31.375"h 330mm(w) x 797mm(H)</p> |
| <p>Shipping</p> <p>Shipping dimensions - ships in one case: OCS case: 19"w x 19"l x 45"h 482.6mm(w) x 482.6mm(l) x 1143mm(h)</p> <p>Approximate shipping weight (entire kit): 49.72 lbs / 22.55 kgs</p> | <p>Center panel: 39.125"w x 31.25"h 994mm(w) x 794mm(H) Power Stretch w/FCE-2</p> <p>Refer to related graphic template for more information</p> <p>Visit: www.exhibitors-handbook.com/graphic-templates</p> |

additional information:

| | |
|---|--|
| <p>Right panel materials available: Single-sided frosted acrylic or printed PVC</p> | <p>Universal literature racks: LN112 LN112-2 LN112-3 LN112-4</p> <p>Lights: (not included) Most fit with proper Linear clip - LN-3P-LT-FXT</p> |
|---|--|

We are continually improving and modifying our product range and reserve the right to vary the specifications without prior notice. All dimensions and weights quoted are approximate and we accept no responsibility for variance. E&OE. See Graphic Templates for graphic bleed specifications.

EXPLODED



| QTY | CODE | DESCRIPTION |
|-----|----------------------|---|
| 2 | SW-FOOT-300 | SMART WALL/ VECTOR FRAME FOOT |
| 1 | OCS | OCS small molded graphics case, 39.5" high |
| 1 | VF-K-TT-02-A-G | VF-K-TT-02-A-G - VECTOR FRAME TABLETOP KIT 2, PANEL A |
| 1 | VF-K-TT-02-B-G | VF-K-TT-02-B-G - VECTOR FRAME TABLETOP KIT 2 GRAPHIC, PANEL B |
| 4 | CB9 | 90 degree joiner |
| 2 | LN112-2 | LITERATURE POCKET FOR EXTRUSIONS (STYLE LN112-2) |
| 2 | LN605-EN | MOLDED END CAP FOR PH EXTRUSION |
| 2 | PH-200-L | 200mm (7.87") PH extrusion w/ Lock one end, one end cap |
| 2 | PHFC2-1000-MCB9-MCB9 | 1000MM LENGTH OF PHFC2 EXTRUSION-WITH MITRE CUT FOR CB9 BOTH |
| 2 | PHFC2-800-MCB9-MCB9 | 800MM LENGTH OF PHFC2 EXTRUSION-WITH MITRE CUT FOR CB9 BOTH SIDES |
| 2 | Panel Clamp | 45-PANEL CLAMP (HAMBURGER CLIP) |
| 1 | 5MM ALLEN-T | 5mm "T" Allen key tool, red handle |

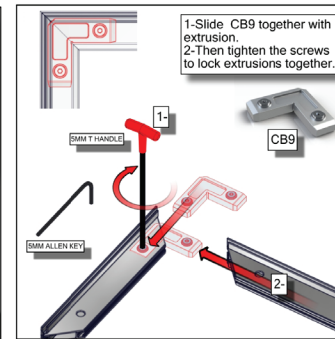
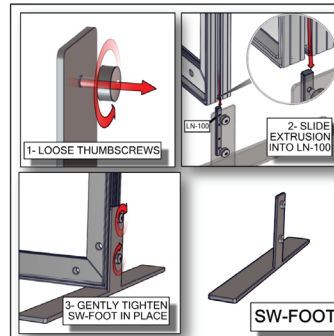
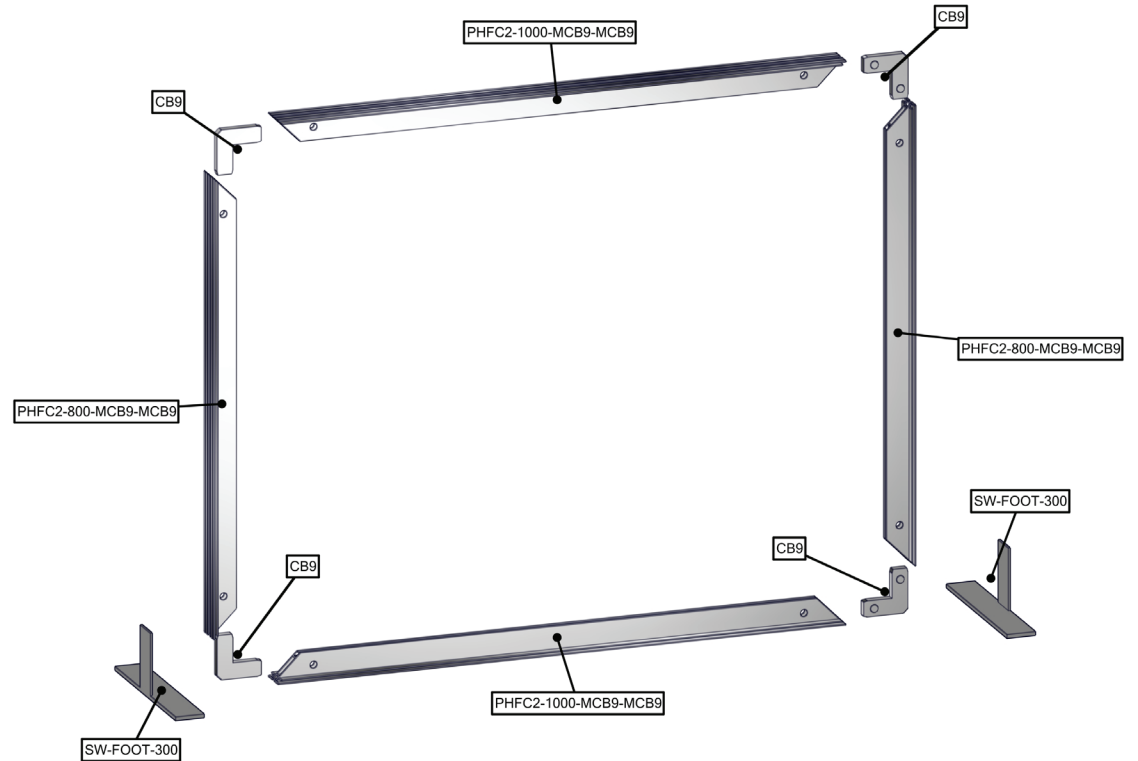
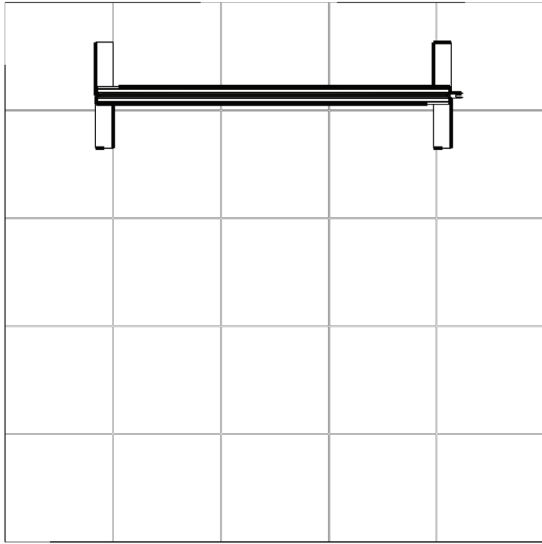
1. Redesign of this exhibit without approval by Manufacturer may result in dangerous and unsafe structures. Manufacturer disclaims any responsibility for redesigned exhibits it does not approve in writing.

2. Parts and components such as panels and extrusions are manufactured to metric sizing. Where ever possible sizes have been noted in feet and inches as well as in metric. Below is the imperial to metric sizing table as reference. "Nominal" refers to approximate size.

BOM

Step 1: Frame Assembly

- Arrange pieces on the floor as shown below.
- Slide corner CB9 together with extrusion, working around the perimeter.
- Then tighten to lock extrusion together.
- To attach SW-FOOT-300, loosen thumbscrew and slide extrusion into LN-100. Gently tighten thumbscrews to secure.

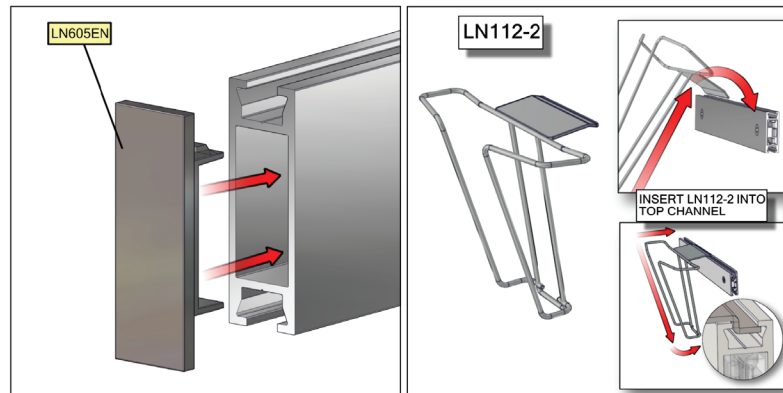
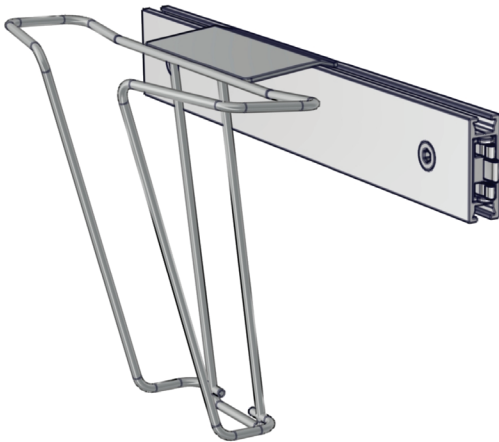
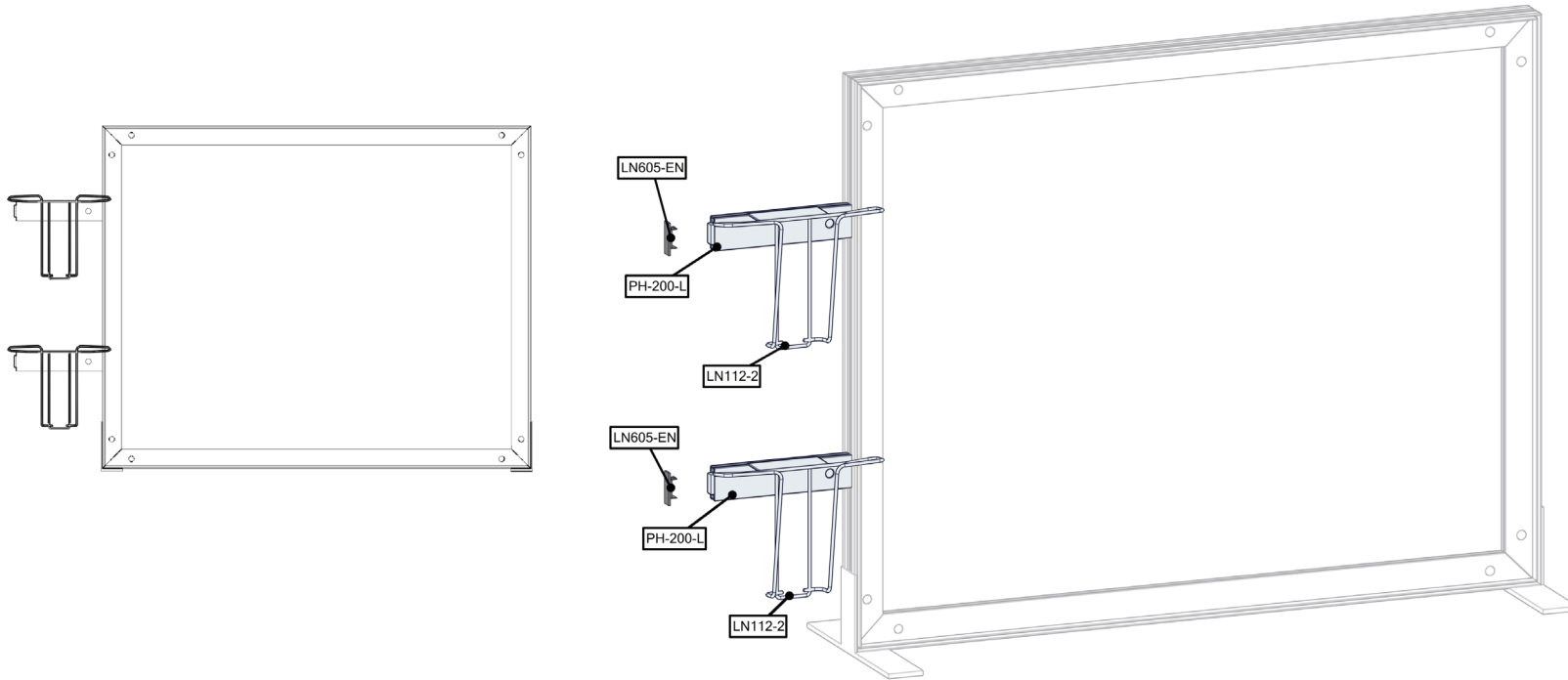


1. Redesign of this exhibit without approval by Manufacturer may result in dangerous and unsafe structures. Manufacturer disclaims any responsibility for redesigned exhibits it does not approve in writing.

2. Parts and components such as panels and extrusions are manufactured to metric sizing. Where ever possible sizes have been noted in feet and inches as well as in metric. Below is the imperial to metric sizing table as reference. "Nominal" refers to approximate size.

Step 2: Lit Holder Attachment

- Attach both PH-200-L to frame at desired heights and install cap LN605EN on end of extrusion.
- Insert lit holder LN112-2 into top channel by tilting the lit rack at an upwards angle and then lowering downward into place.

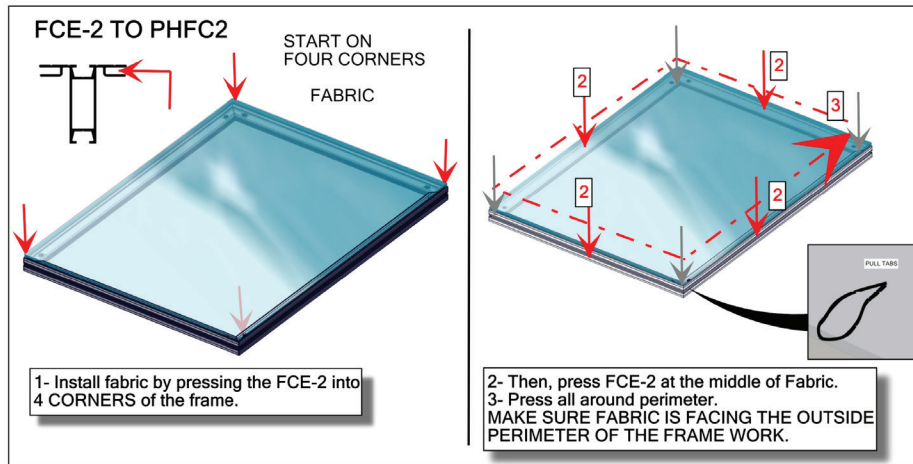
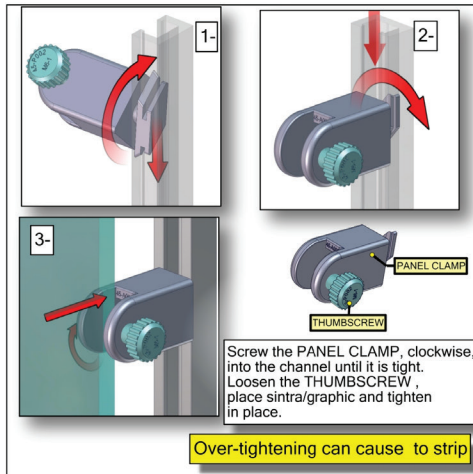
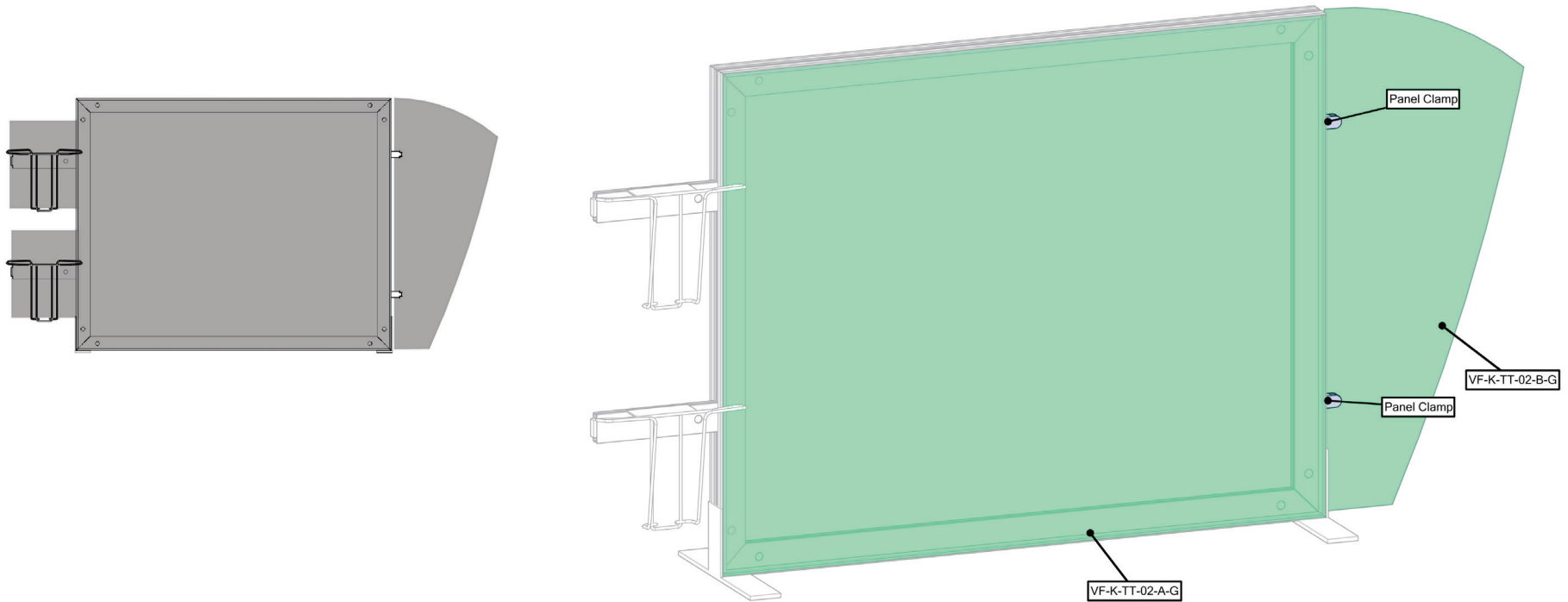


1. Redesign of this exhibit without approval by Manufacturer may result in dangerous and unsafe structures. Manufacturer disclaims any responsibility for redesigned exhibits it does not approve in writing.

2. Parts and components such as panels and extrusions are manufactured to metric sizing. Where ever possible sizes have been noted in feet and inches as well as in metric. Below is the imperial to metric sizing table as reference. "Nominal" refers to approximate size.

Step 3: Graphic Attachment

- First, attach the fabric graphic and press FCE-2 into extrusion channel. Start in each corner of frame, then push SEG bead around the perimeter of the frame until all beading is pushed in properly.
- Next, screw the PANEL CLAMP clockwise, into the channel until it is tight. Loosen the THUMBSCREW, place sintra/graphic and tighten in place. Be careful not to overtighten as that could strip the screws.



1. Redesign of this exhibit without approval by Manufacturer may result in dangerous and unsafe structures. Manufacturer disclaims any responsibility for redesigned exhibits it does not approve in writing.

2. Parts and components such as panels and extrusions are manufactured to metric sizing. Where ever possible sizes have been noted in feet and inches as well as in metric. Below is the imperial to metric sizing table as reference. "Nominal" refers to approximate size.