

# Vector Frame Tabletop 04

## VF-K-TT-04

Vector Frame™ Table Top Kits provide modern and dynamic flare to your marketing message. The SEG fabric graphics and extrusion-based displays are simple, lightweight and take minutes to assemble. Units come in a sturdy case. Customized units also available.



We are continually improving and modifying our product range and reserve the right to vary the specifications without prior notice. All dimensions and weights quoted are approximate and we accept no responsibility for variance. E&OE. See Graphic Templates for graphic bleed specifications.

## features and benefits:

- Custom appearance
- Easy to assemble
- 50mm silver extrusion frame
- Single-sided SEG dye-sublimated fabric graphics
- Installation tool included
- Kit includes one OCS case, two literature pockets, and two wing graphics
- Lifetime hardware warranty against manufacturer defects

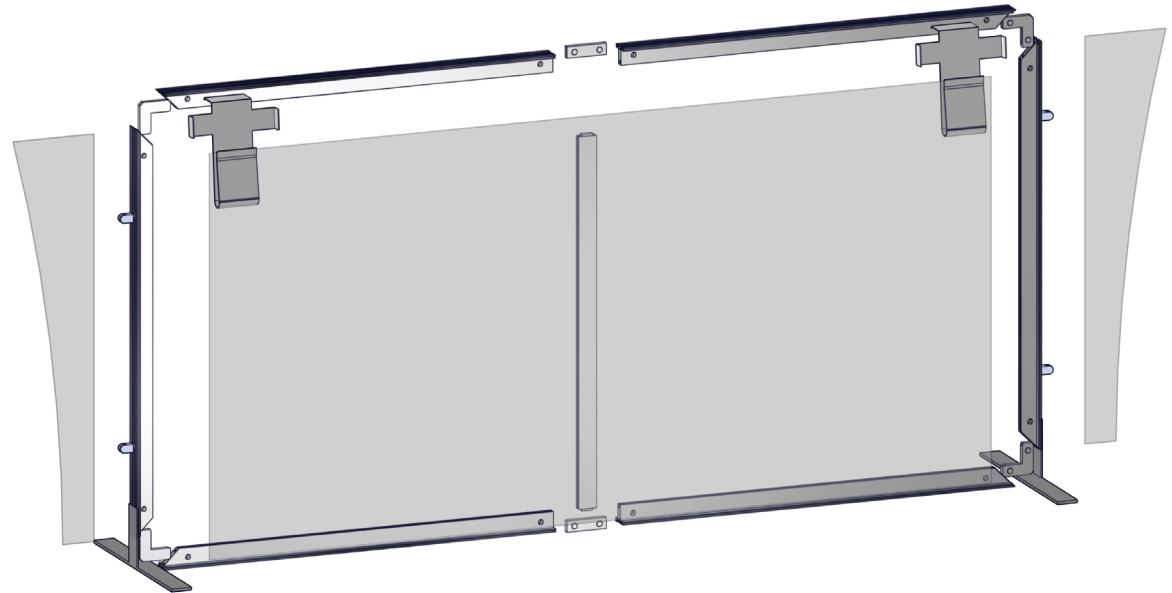
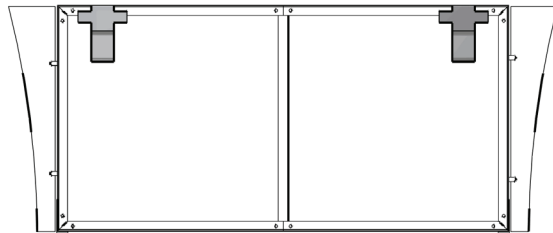
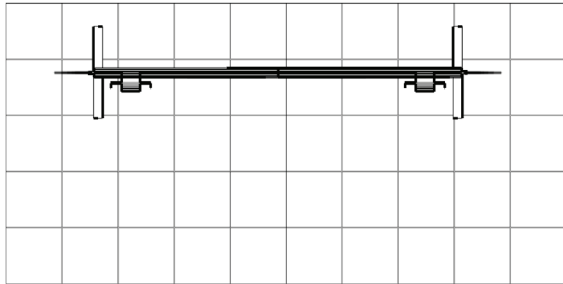
## dimensions:

Hardware	Graphic
<p>Assembled unit: 95.7" w x 41.6" h x 11.81" d 2431mm(w) x 1057mm(h) x 300mm(d)</p>	<p>Total visual area: Left panel: 8.125" w x 39.375" h 206mm(w) x 1000mm(h)</p> <p>Right panel: 8.125" w x 39.375" h 206mm(w) x 1000mm(h)</p> <p>Center panel: 78.49" w x 39.125" h 1994mm(w) x 994mm(h)</p>
<p>Shipping</p> <p>Shipping dimensions - ships in one case OCS case: 19" w x 19" l x 45" h 482.6mm(w) x 482.6mm(l) x 1143mm(h)</p> <p>Approximate shipping weight (entire kit): 56.72 lbs / 25.73 kgs</p>	<p>Power Stretch w/FCE-2</p> <p>Refer to related graphic template for more information</p> <p>Visit: <a href="http://www.exhibitors-handbook.com/graphic-templates">www.exhibitors-handbook.com/graphic-templates</a></p>

## additional information:

<p>Left and right panel materials available: Single-sided frosted acrylic or printed PVC</p>	<p>Universal literature racks: LN112 LN112-2 LN112-3 LN112-4</p> <p>Lights: (not included) Most fit with proper Linear clip - LN-3P-LT-FXT</p>
--	--

# EXPLODED



QTY	CODE	DESCRIPTION
2	LN112-3	LITERATURE POCKET FOR EXTRUSIONS (STYLE LN112-3)
2	SW-FOOT-300	SMART WALL/ VECTOR FRAME FOOT
1	OCS	OCS small molded graphics case, 39.5" high
1	VF-K-TT-04-A-G	VF-K-TT-04-A-G - LINEAR TABLETOP KIT 4 GRAPHIC, LEFT PANEL
1	VF-K-TT-04-B-G	VF-K-TT-04-B-G - LINEAR TABLETOP KIT 4 GRAPHIC, CENTER PANEL
1	VF-K-TT-04-C-G	VF-K-TT-04-C-G - LINEAR TABLETOP KIT 4 GRAPHIC, RIGHT PANEL
2	IB2	Joiner Bar(new design)
4	CB9	90 degree joiner
1	PH-910-L-L	910mm PH extrusion with locks both ends
4	PHFC2-1000-L1-MCB9	1000MM LENGTH OF PHFC2 EXTRUSION-WITH MITRE CUT FOR CB9 ONE
2	PHFC2-1000-MCB9-MCB9	1000MM LENGTH OF PHFC2 EXTRUSION-WITH MITRE CUT FOR CB9 BOTH
4	Panel Clamp	45-PANEL CLAMP (HAMBURGER CLIP)
1	5MM ALLEN-T	5mm "T" Allen key tool, red handle

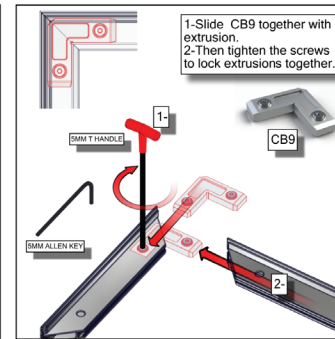
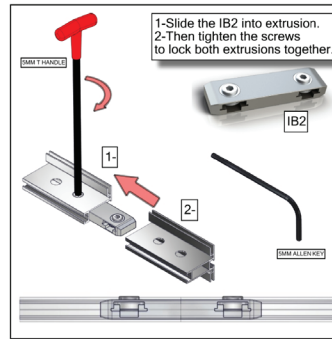
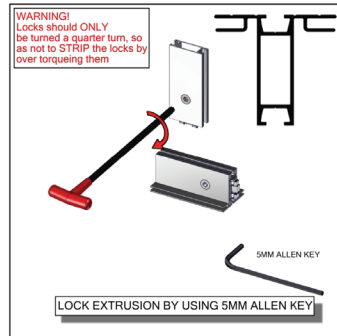
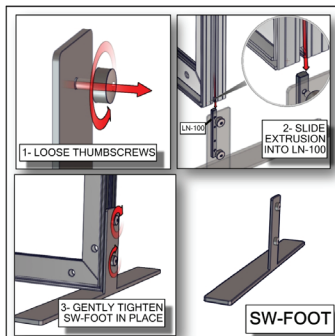
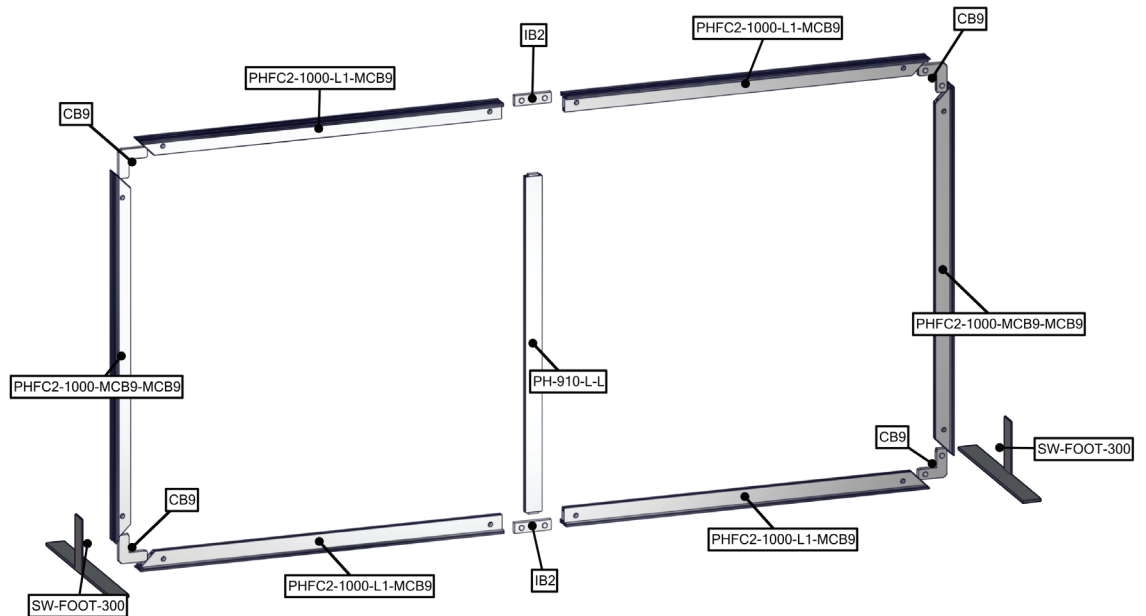
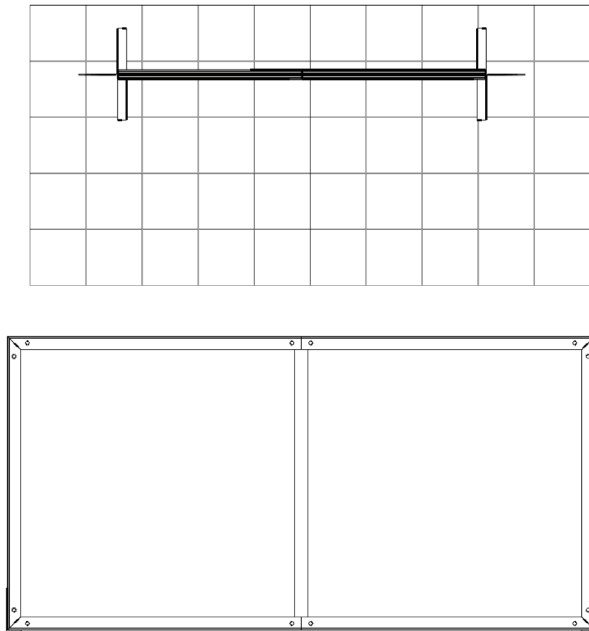
1. Redesign of this exhibit without approval by Manufacturer may result in dangerous and unsafe structures. Manufacturer disclaims any responsibility for redesigned exhibits it does not approve in writing.

2. Parts and components such as panels and extrusions are manufactured to metric sizing. Where ever possible sizes have been noted in feet and inches as well as in metric. Below is the imperial to metric sizing table as reference. "Nominal" refers to approximate size.

BOM

## Step 1: Frame Assembly

- Arrange pieces on the floor as shown below.
- Slide corner CB9 together with extrusion, working around the perimeter.
- Slide IB2 into the extrusion at center of frame with PHFC2-1000-L1-MCB9 extrusion on top and bottom.
- In center of frame secure PH-910-L-L to IB2 and lock extrusion using 5mm Allen key.
- Then tighten to lock all extrusion pieces together.
- To attach SW-FOOT-300, loosen thumbscrew and slide extrusion into LN-100. Gently tighten thumbscrews to secure.

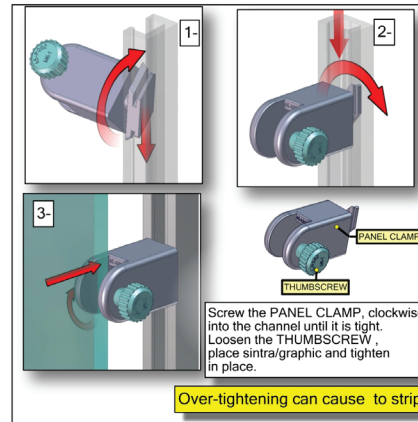
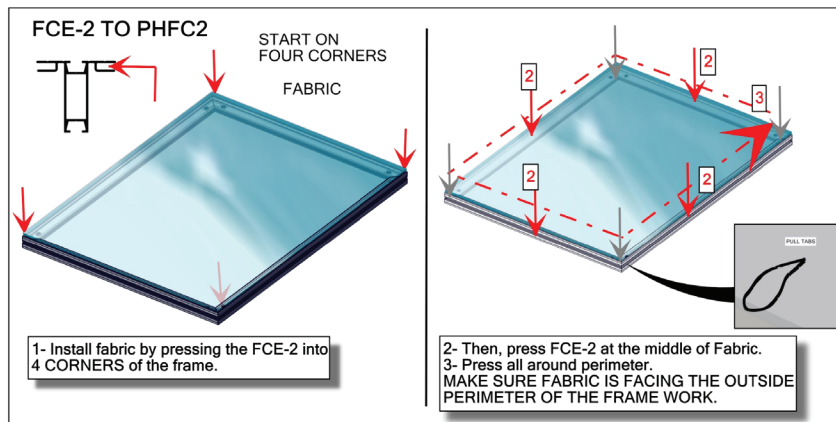
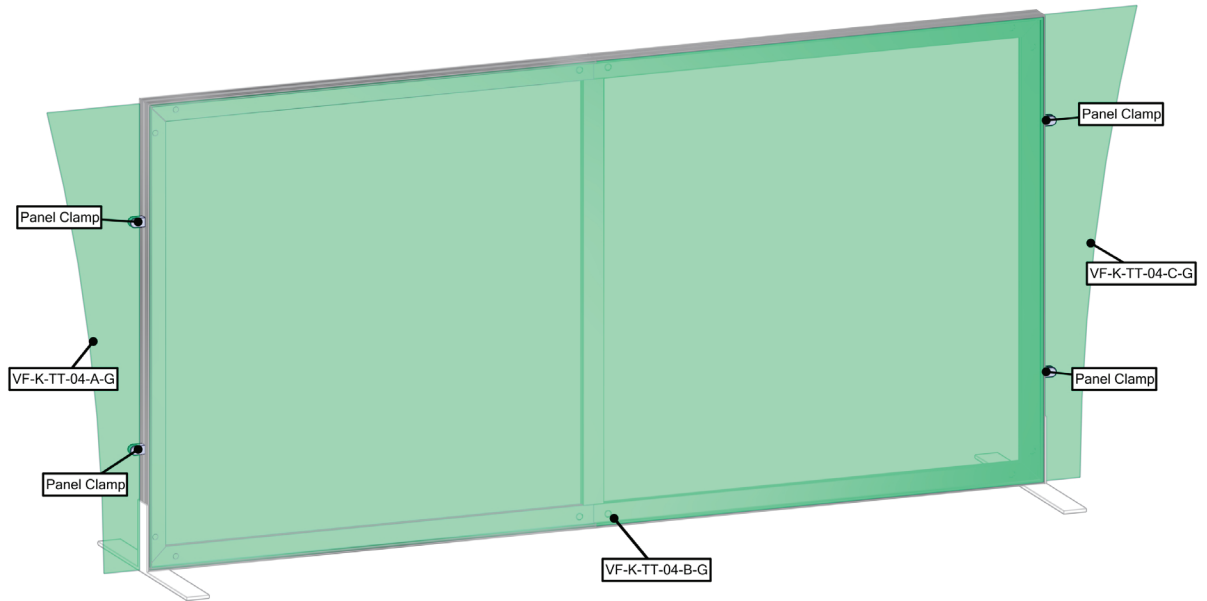
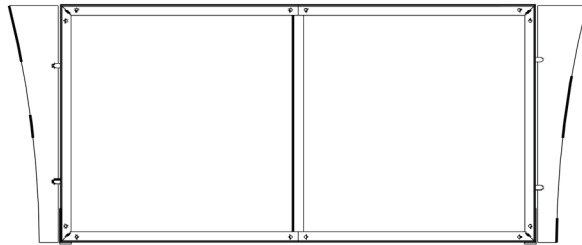
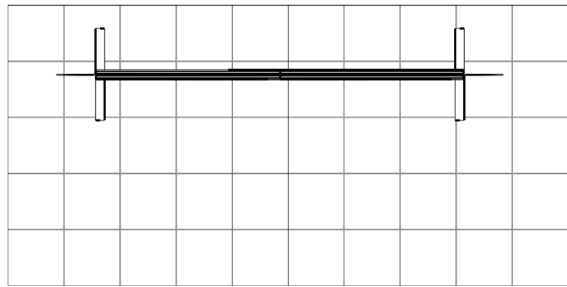


1. Redesign of this exhibit without approval by Manufacturer may result in dangerous and unsafe structures. Manufacturer disclaims any responsibility for redesigned exhibits it does not approve in writing.

2. Parts and components such as panels and extrusions are manufactured to metric sizing. Where ever possible sizes have been noted in feet and inches as well as in metric. Below is the imperial to metric sizing table as reference. "Nominal" refers to approximate size.

## Step 2: Graphic Attachment

- First, attach the fabric graphic and press FCE-2 into extrusion channel. Start in each corner of frame, then push SEG bead around the perimeter of the frame until all beading is pushed in properly.
- Next, screw the PANEL CLAMP clockwise, into the channel until it is tight. Loosen the THUMBSCREW, place sintra/graphic and tighten in place. Be careful not to overtighten as that could strip the screws. Repeat for both sides.

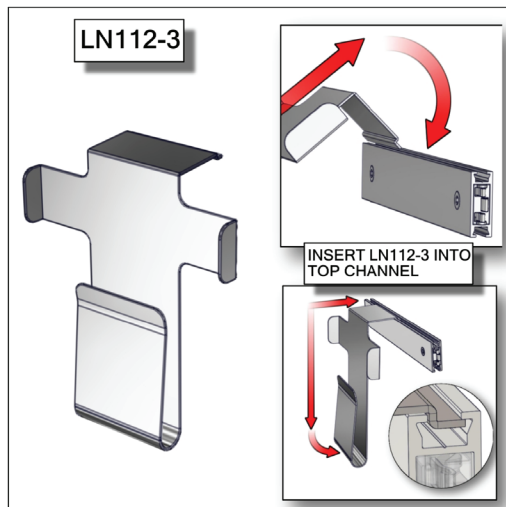
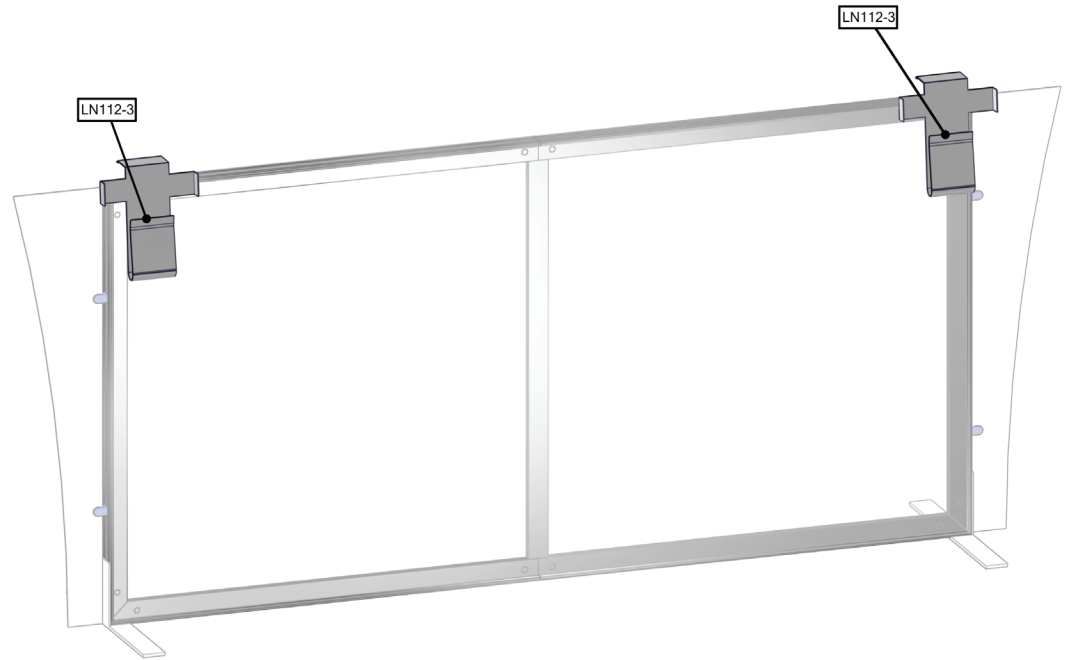
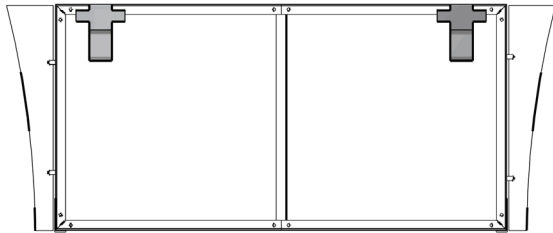
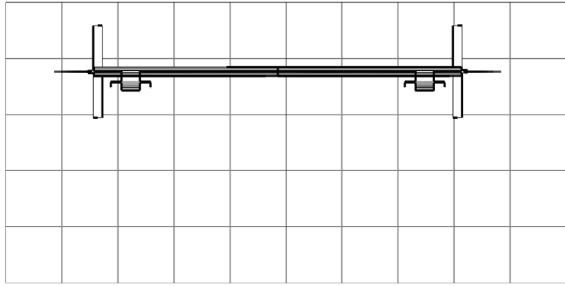


1. Redesign of this exhibit without approval by Manufacturer may result in dangerous and unsafe structures. Manufacturer disclaims any responsibility for redesigned exhibits it does not approve in writing.

2. Parts and components such as panels and extrusions are manufactured to metric sizing. Where ever possible sizes have been noted in feet and inches as well as in metric. Below is the imperial to metric sizing table as reference. "Nominal" refers to approximate size.

### Step 3: Attach Lit Racks

- Insert lit rack LN112-3 into top extrusion channel of frame by tilting the lit rack at an upwards angle and then lowering downward into place. Repeat for second lit rack.



1. Redesign of this exhibit without approval by Manufacturer may result in dangerous and unsafe structures. Manufacturer disclaims any responsibility for redesigned exhibits it does not approve in writing.

2. Parts and components such as panels and extrusions are manufactured to metric sizing. Where ever possible sizes have been noted in feet and inches as well as in metric. Below is the imperial to metric sizing table as reference. "Nominal" refers to approximate size.