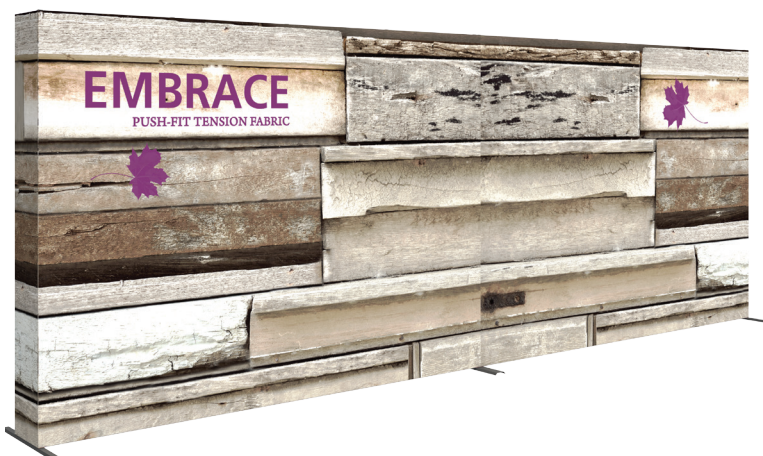


Embrace - Inlines

Embrace™ Fabric Backwalls can be connected together easily with a simple clamp system to create 20ft and 30ft inline backwall displays. Embrace displays feature seamless, clean, crisp lines due to the push-fit fabric graphics that hug the collapsible frame. Embrace Inline Kits include your choice of either single or double-sided graphics and also the choice of front or full fitted graphics with end caps. The graphic is one, long piece!



features and benefits:

- Lighter weight anodized silver frame
- Choice of single or double-sided graphics with front or full fitted with endcaps
- Simple assembly
- Additional stacking and linking options now available
- Perimeter channel bars connect to frame and hold push-fit fabric graphics
- Rolling carry bags included.
- Lifetime hardware warranty against manufacturer defects

dimensions:

Hardware:

Assembled Dimensions

8x3:

234.85" w x 89.4" h x 28.95" d
5965mm(w) x 2271mm(h) x 735mm(d)

12x3:

351.9" w x 89.4" h x 28.95" d
8938mm(w) x 2271mm(h) x 735mm(d)

Shipping:

Hardware Only

EMB-8x3:

Box 1: 38" l x 15" h x 9" d / 50lbs
965mm(l) x 381mm(h) x 229mm(d) / 23kg

Box 2: 38" l x 15" h x 9" d / 50lbs
965mm(l) x 381mm(h) x 229mm(d) / 23kg

EMB-12x3:

Box 1: 38" l x 15" h x 9" d / 50lbs
965mm(l) x 381mm(h) x 229mm(d) / 23kg

Box 2: 38" l x 15" h x 9" d / 50lbs
965mm(l) x 381mm(h) x 229mm(d) / 23kg

Graphics:

Refer to related graphic template for more information.

Visit exhibitors-handbook.com/graphic-templates

additional information:

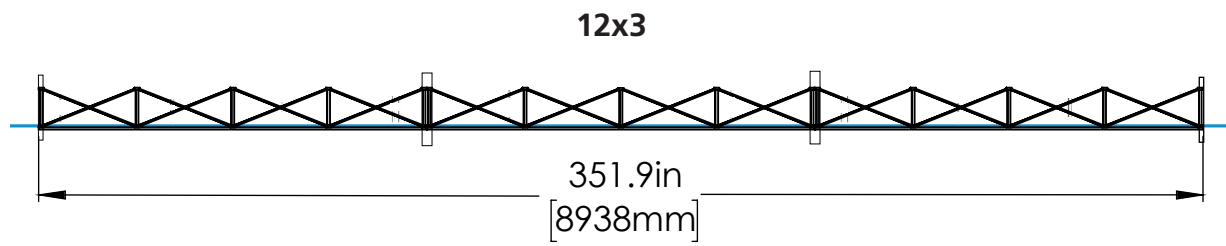
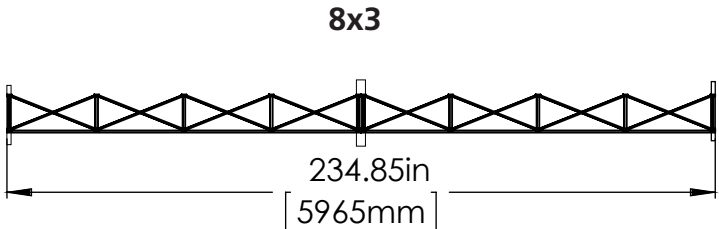
* Lights not included.

* Do not attempt to connect frames lying on the floor. Frames must always be upright when assembling.

We are continually improving and modifying our product range and reserve the right to vary the specifications without prior notice. All dimensions and weights quoted are approximate and we accept no responsibility for variance. E&OE. See Graphic Templates for graphic bleed specifications.

Embrace - Inlines

8x3 frame fits in a 20ft booth space. 12x3 fits in a 30ft booth space. All kits include necessary feet.



Embrace - Included In Your Kit

Linking Instructions

8x3

QTY

- 8 - Channel Bars (EMB-CB-3)
- 8 - Channel Bars (EMB-CB-4)
- 1 - Wide Foot (EMB-FOOT-WIDE)
- 2 - Embrace Foot (EMB-FOOT)
- 6 - Straight Connector (EMB-SL-CONNECTOR)

12x3

QTY

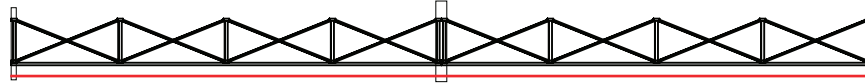
- 12 - Channel Bars (EMB-CB-3)
- 12 - Channel Bars (EMB-CB-4)
- 2 - Wide Foot (EMB-FOOT-WIDE)
- 2 - Embrace Foot (EMB-FOOT)
- 12 - Straight Connector (EMB-SL-CONNECTOR)

*** Quantity required shown. Assembled units may leave additional unused hardware.**

Embrace - Graphic Options

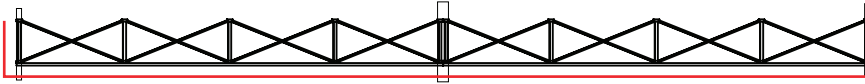
Linking Instructions

EMB-8x3-SF-G



SINGLE FRONT SIDE GRAPHIC

EMB-8X3-SFEC-G



SINGLE FRONT SIDE GRAPHIC WITH ENDCAPS

EMB-12X3-SF-G



SINGLE FRONT SIDE GRAPHIC

EMB-12X3-SFEC-G

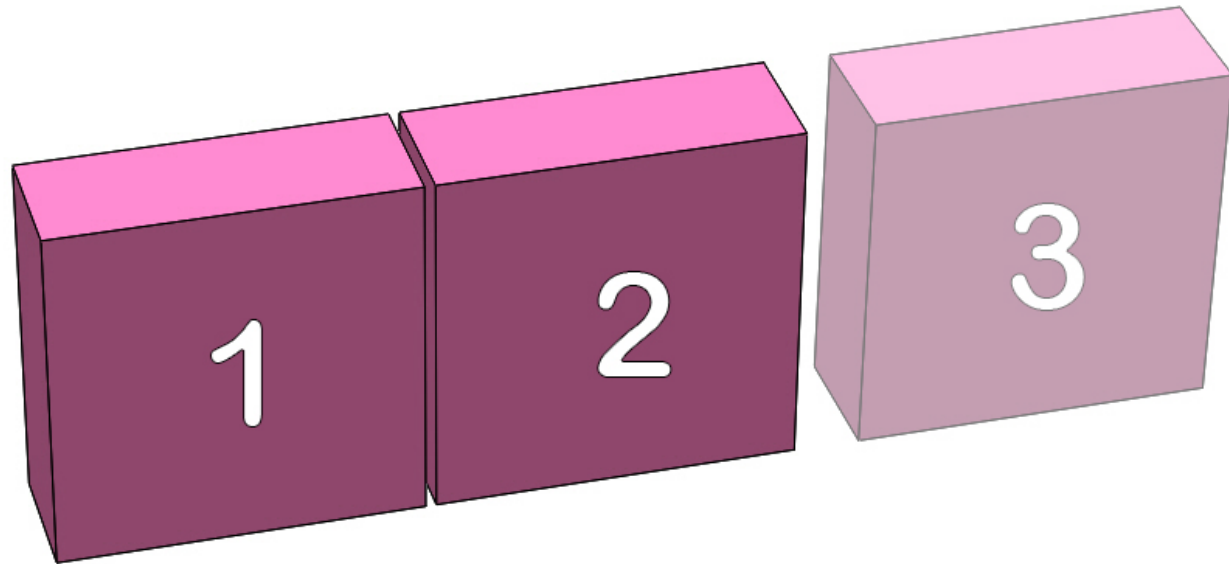


SINGLE FRONT SIDE GRAPHIC WITH ENDCAPS

Embrace - Build Sequence

Linking Instructions

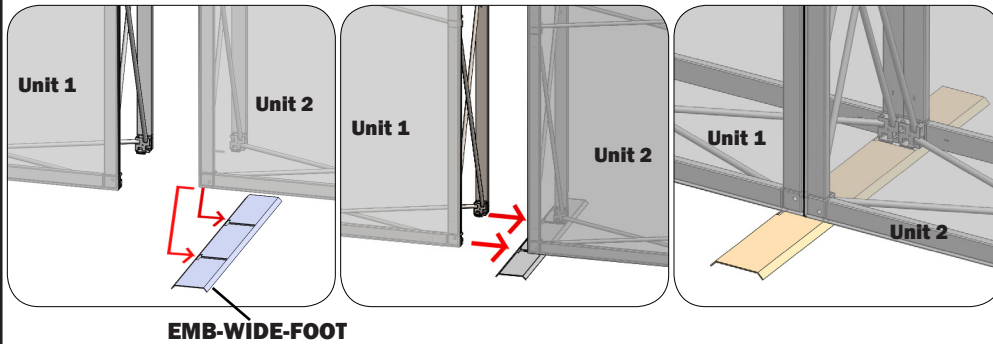
For safety best practice, follow this sequence of assembly steps.



Embrace

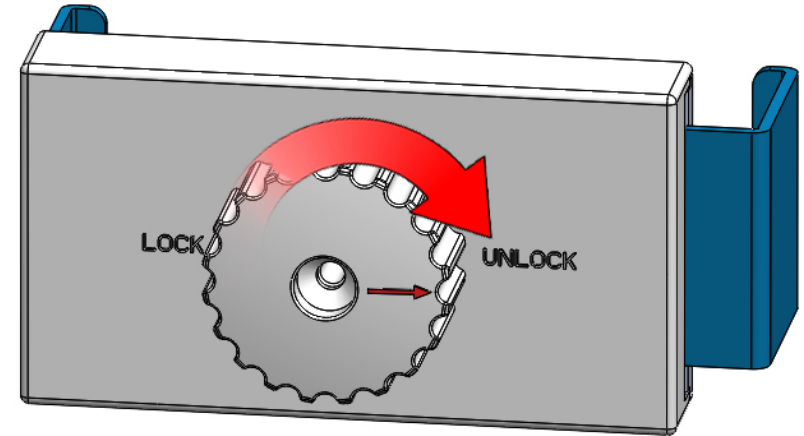
Linking Instructions

1



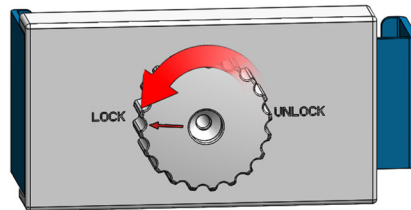
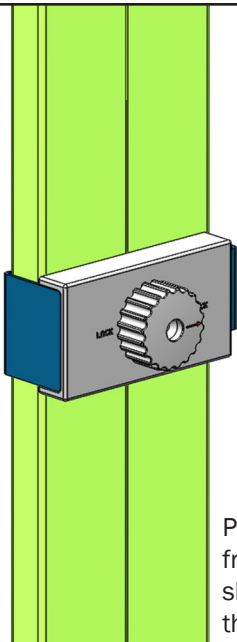
For joining two assembled units, begin by adding one “EMB-WIDE-FOOT” between each pair of units. Slide Unit 2’s (the right unit) bottom left dovetail into the foot. Slide Unit 1’s (the left unit) bottom right dovetails into the foot second.

2



Prepare your straight connectors by setting them to the “Unlock” position as shown.

3



Place your Straight Connectors onto each quadrant, both front and back of the units, on the INSIDE of the frame as shown in the figure right. Lock each connector by setting the knob to the “Lock” position as shown.

