

# Formulate 10' Vertical Curve - Kit 6

## FMLT-WV10-06

Formulate™ is a collection of sophisticated, ergonomically designed exhibit booths. Formulate combines state-of-the-art zipper pillowcase dye-sublimated fabric coverings with advanced lightweight aluminum structures to provide unique design, functionality, and style. The excellence of the Formulate line of displays, hanging structures and products is simply unmatched. Stretch fabric graphics are hand-sewn, durable and dry-cleanable.



## features and benefits:

- State-of-the-art 50mm aluminum tube with internal spigot connectors
- Easy to store and ship
- Quick to set up
- Supports monitor\* up to 37", max 40 lbs.
- Kit includes: one frame, one dye-sublimated pillowcase zipper graphic, one monitor mount, and one wheeled OCH2 shipping case
- Lifetime hardware warranty against manufacturer defects

## dimensions:

Hardware	Graphic
<p>Assembled unit: 114"w x 92"h x 33.5"d</p> <p>Approximate kit weight: 75 lbs / 34 kgs</p>	<p>Refer to related graphic template for more information.</p> <p>Visit: <a href="http://www.exhibitors-handbook.com/graphic-templates">www.exhibitors-handbook.com/graphic-templates</a></p>
Shipping	
<p>Shipping dimensions: One OCH2 case: 52"l x 29"h x 15"d</p> <p>Approximate shipping weight: (kit and case) 95 lbs / 43 kgs</p>	

## additional information:

Graphic materials:  
Dye-sublimated zipper pillowcase fabric

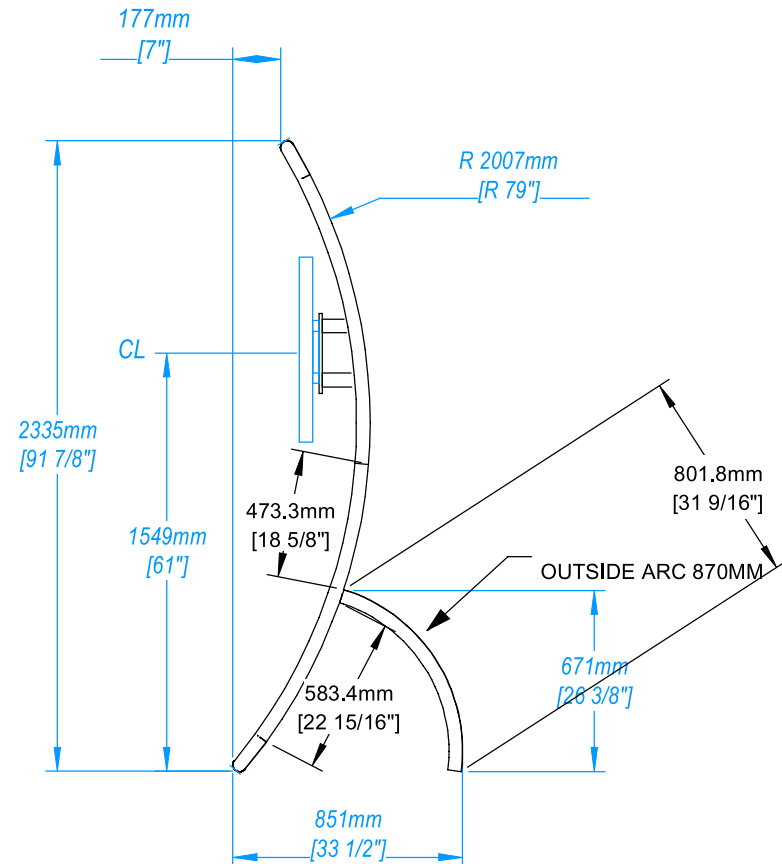
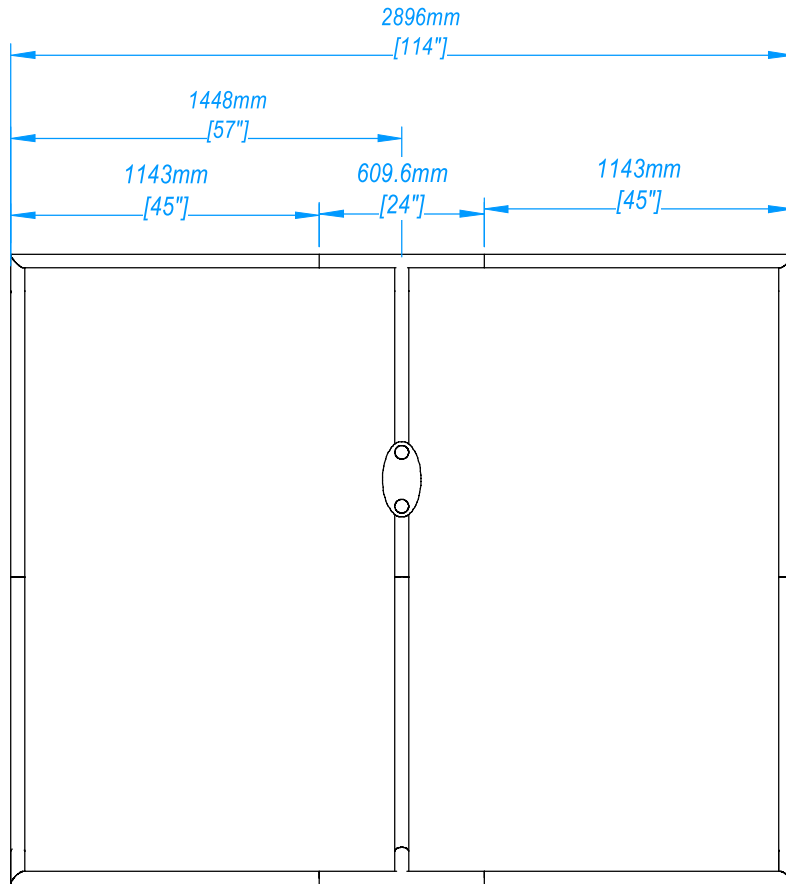
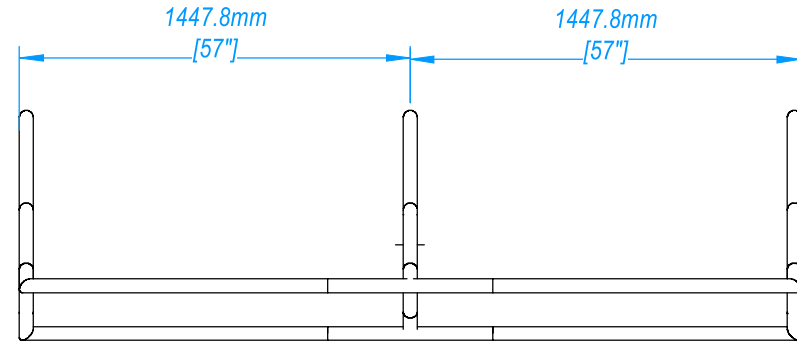
Optional accessories:  
Lumina 8-50 watt halogen lighting

Monitor Mount:  
Max T.V. Size is 37" and 40 lbs.

\*Monitor not included

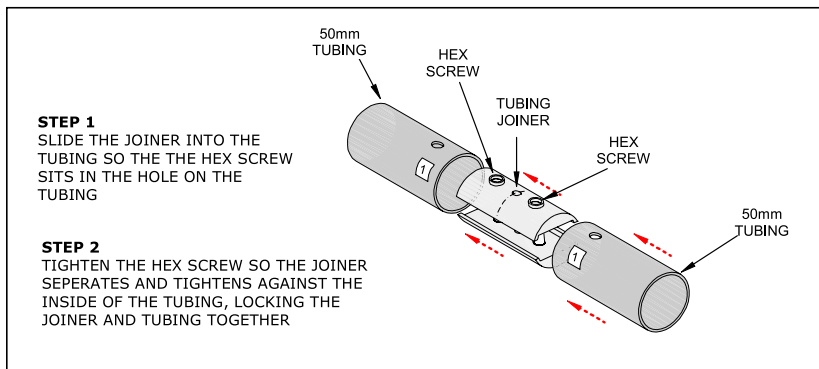
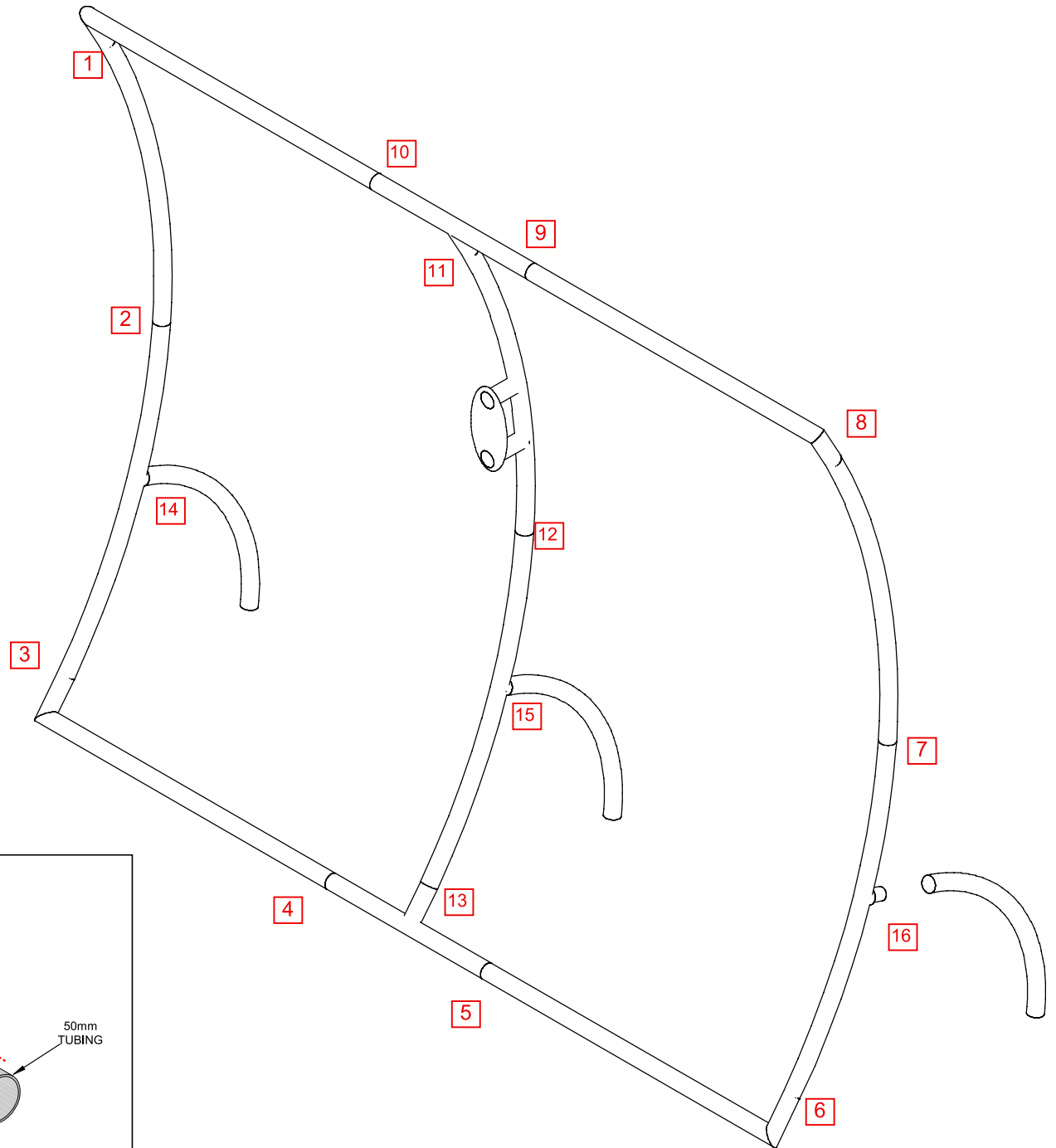
We are continually improving and modifying our product range and reserve the right to vary the specifications without prior notice. All dimensions and weights quoted are approximate and we accept no responsibility for variance. E&OE. See Graphic Templates for graphic bleed specifications.

Parts Included		
Part Label	Qty	Part Code
FABRIC GRAPHIC	x1	WV10-01-G
EXPANDING SPIGOT FOR 50MM TUBE	x13	ES50
LARGE MONITOR MOUNT	x1	TUBE-SM-MB
50MM TUBE	x6	TUBE-50MM-3700-S
SNAP BUTTON FOR TUBE	x3	SNAP BUTTON 50MM



## STEP 1: ASSEMBLE FRAME

- Assemble unit by laying tubes flat on the floor. Connect the tube rails by pressing the push pin buttons in and slide over (see detailed drawing below) following the number labels listed, 1 to 1, 2 to 2 and so on.
- Apply graphic before attaching support legs (14, 15 & 16), see step 2 on next page.



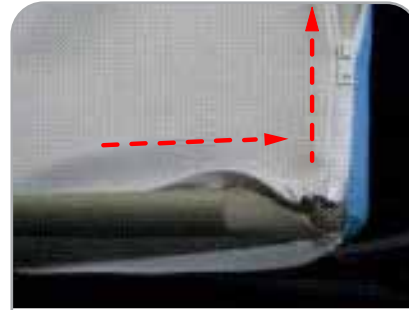
## STEP 2: ATTACH GRAPHIC



Engage both zippers on the zipper side before pulling graphic over the corner of the frame.



Pull zippered corner over left corner of the frame. DO NOT ZIP any more until over all four corners.

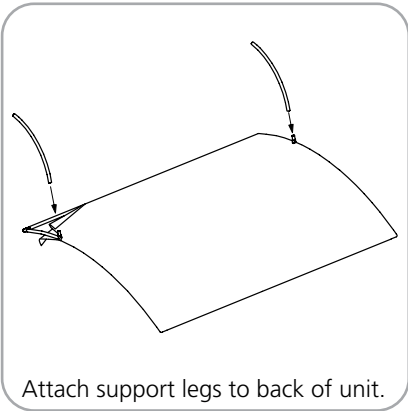


Engage zipper on right side and pull graphic over right corner of frame.



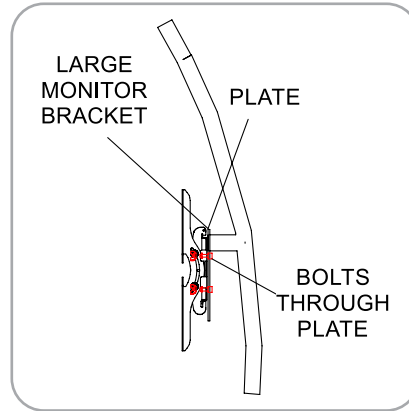
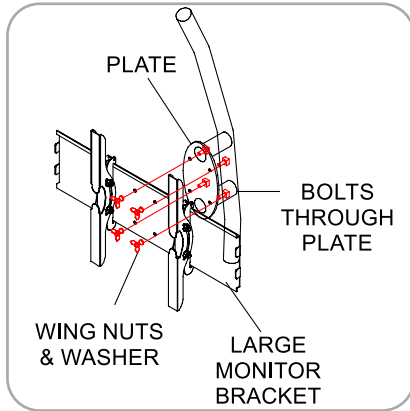
Once the graphic is over all corners, extend all zippers.

## STEP 3: ATTACH SUPPORT LEGS



Attach support legs to back of unit.

## STEP 4: ATTACH MONITOR



Unit is complete.

# Monitor Bracket Instructions

## Tube Applications



**TUBE-SM-MB**  
Sizes: 17" - 37"  
Max weight varies per application

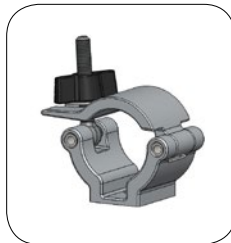


**TUBE-M-MB**  
Sizes: 32" - 55"  
Max weight varies per application



**TUBE-LG-MB**  
Sizes: 40" - 65"  
Max weight varies per application

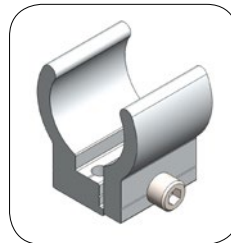
### Included hardware:



**ACC60** x2



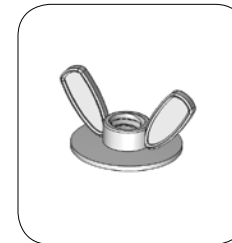
**TCH-30** x2



**TC-30MM-SILVER** x2



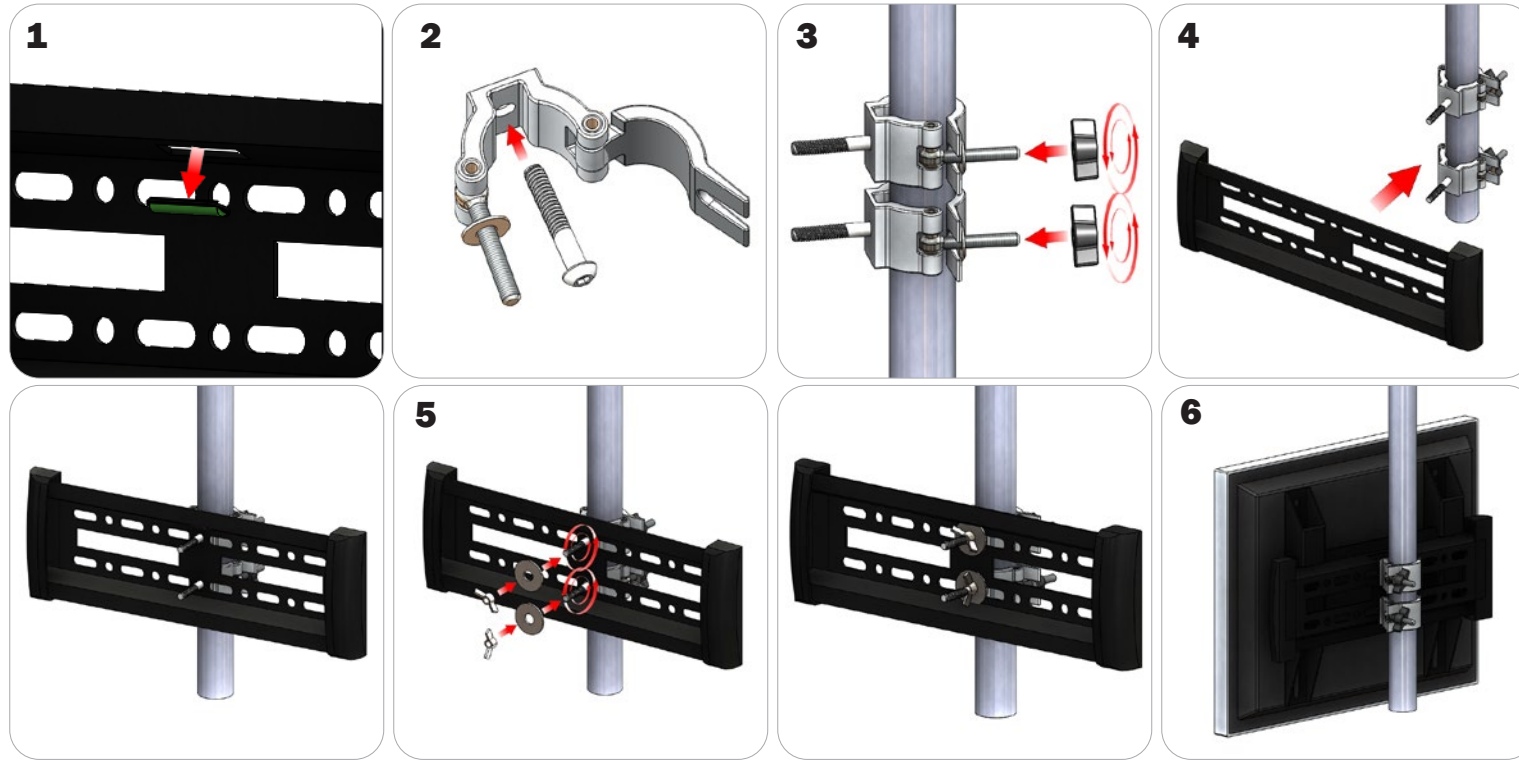
**BOLT-1** x4



**Flange Wingnut** x4

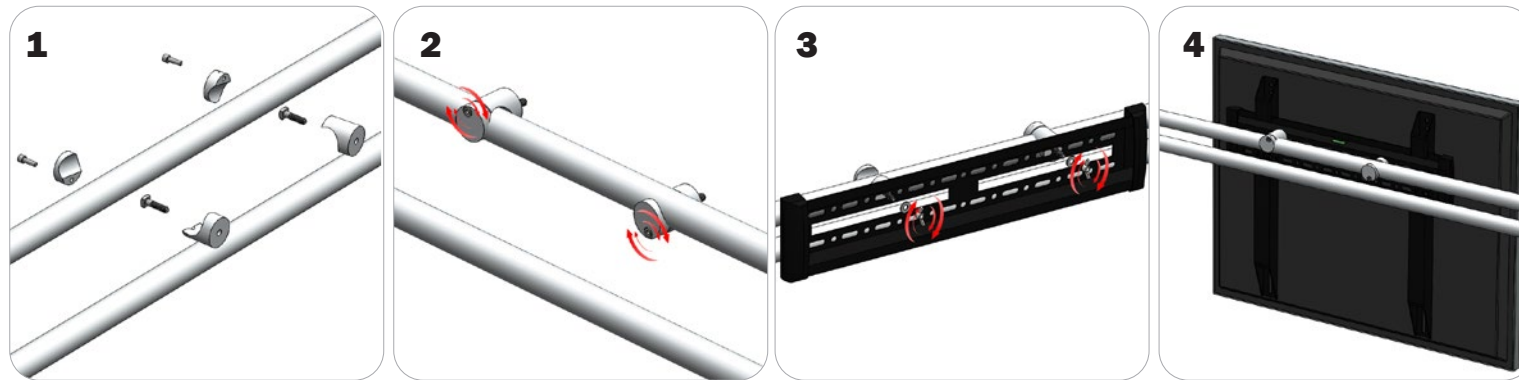
# TUBE CONNECTION

## ACC60 Clamp Connection



Locate all components needed to assemble the monitor mount with the ACC60 tube method. You will need (1) monitor bracket, (2) ACC60 clamps, (2) washers, and (2) wingnuts. **Step 1:** Apply pressure to the rear side of the leveling gauge clipped into the monitor mount to remove it. **Step 2:** Push the provided bolt through the hole in the ACC60 and place the ACC60 in the desired location. **Step 3:** Tighten the clamp to the tube using the plastic wingnut. **Step 4:** Set your monitor bracket onto the protruding bolts using the of the ACC60 using the center holes on the monitor bracket., adjust ACC60 position if necessary. **Step 5:** Lock your monitor bracket to the ACC60s by placing your washers and locking with provided wingnuts. **Step 6:** Reference the included manufacturer monitor mount instructions for fastening your monitor to the bracket.

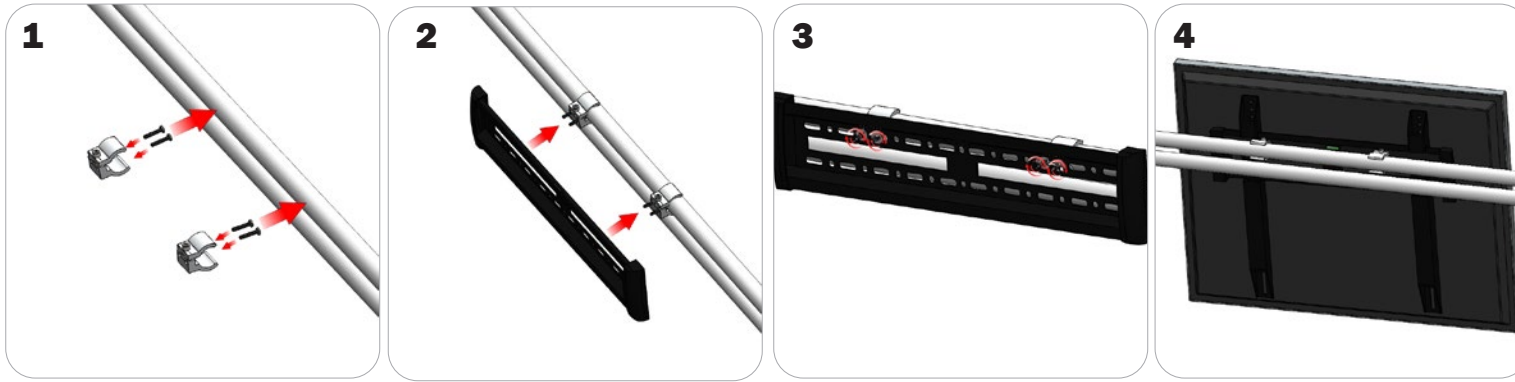
## TCH Clamp Connection (Tablet Stands)



Locate all components needed to assemble the monitor mount with the TCH tube method. You will need (1) monitor bracket, (2) TCH clamps, (2) bolts, (2) washers, and (2) wingnuts. Determine your desired monitor location. **Step 1:** Fit the provided bolts through the TCH clamps then reassemble the clamp. **Step 2:** Lock the clamp onto the tube with the allen head screws on the clamp. **Step 3:** Align your monitor bracket so that the left and right holes slide onto the bolts behind them. Use your washers and wingnuts to lock your monitor bracket in place. **Step 4:** Reference the included manufacturer monitor mount instructions for fastening your monitor to the bracket.

# TUBE CONNECTION

## TC-30 Clamp Connection



Locate all components needed to assemble the monitor mount with the TC-30 tube clamp method. You will need (1) monitor bracket, (2) TC-30-SILVER clamps, (4) BOLT-1 screws, and (4) flange wingnuts. **Step 1:** Insert the pan-head screws through the holes of your TC-30 clamps. Attach the TC-30 clamps to the tubes but do not tighten. **Step 2:** Set your monitor bracket onto the protruding pan-head screws on your clamps using the holes in the monitor bracket. **Step 3:** Apply your flange wingnuts to the front of your monitor bracket to lock it to the clamps. Lock your clamps securely into place. **Step 4:** Reference the included manufacturer monitor mount instructions for fastening your monitor to the bracket.